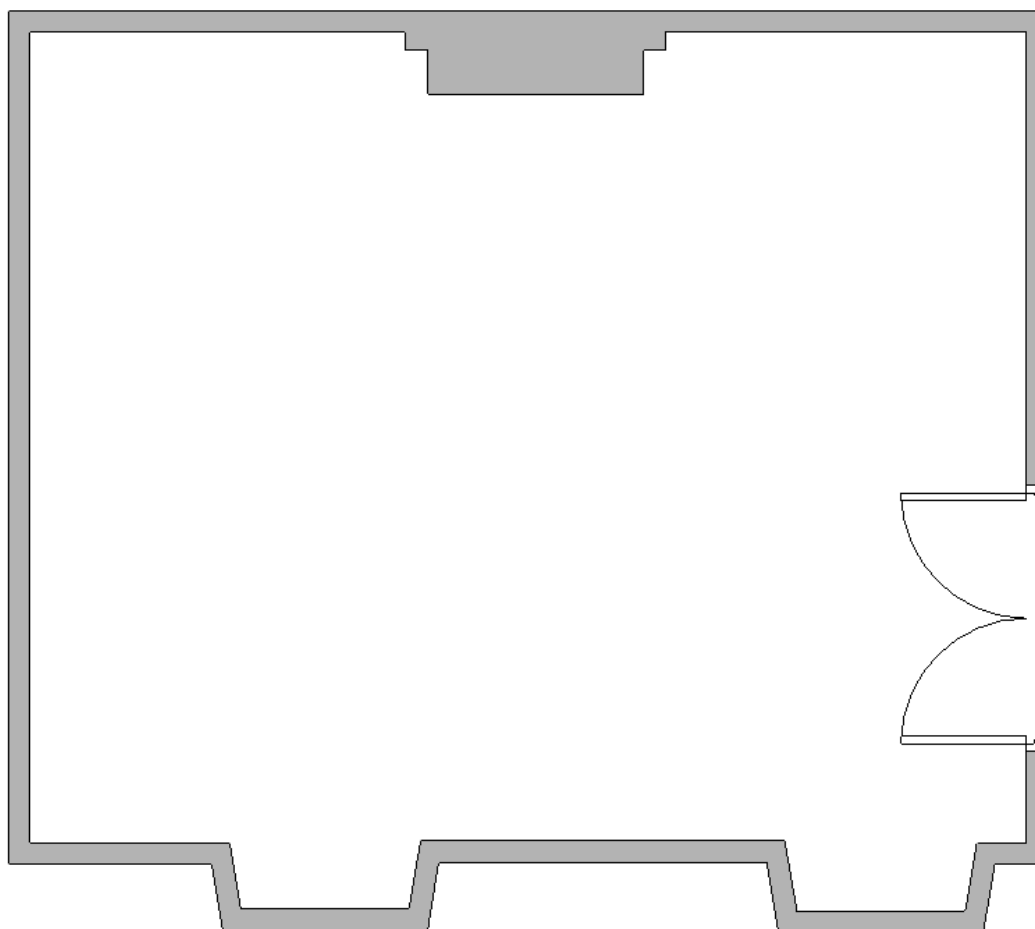


Old Gala House – Scott Room

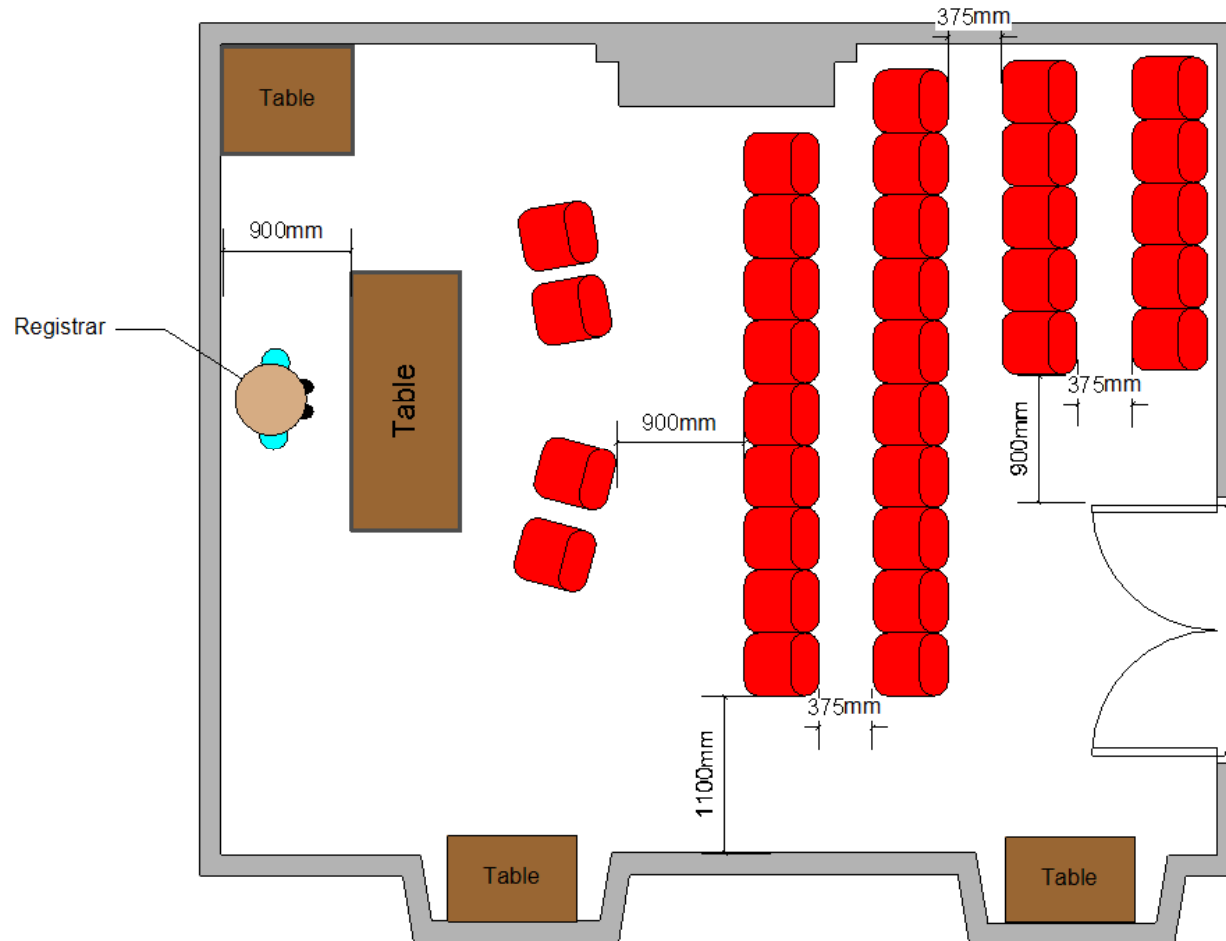
Area = 40m² (less walkways = 34m²)

Maximum Occupancy – Standing Only = 60 (limited by only 1 exit opening against the flow of travel)



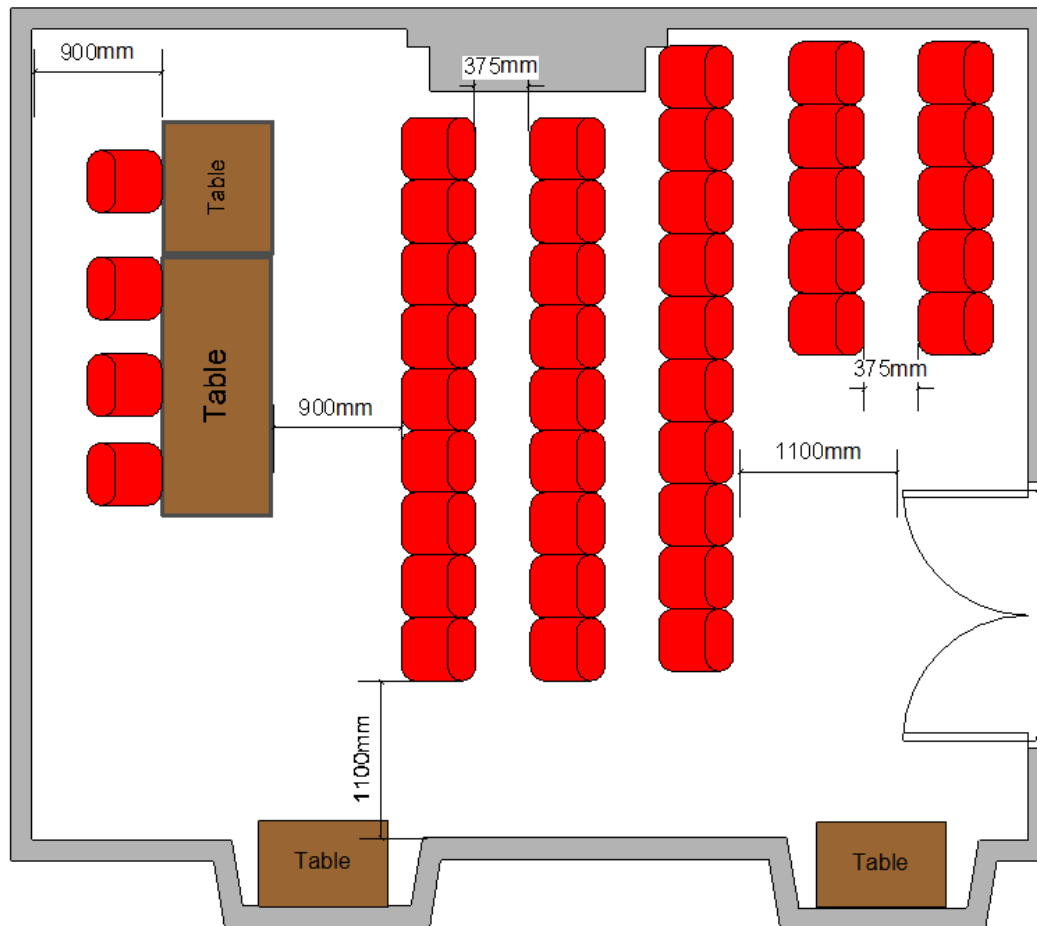
Old Gala House – Scott Room: Wedding Ceremony

Maximum Occupancy = 33 (wedding party & guests)



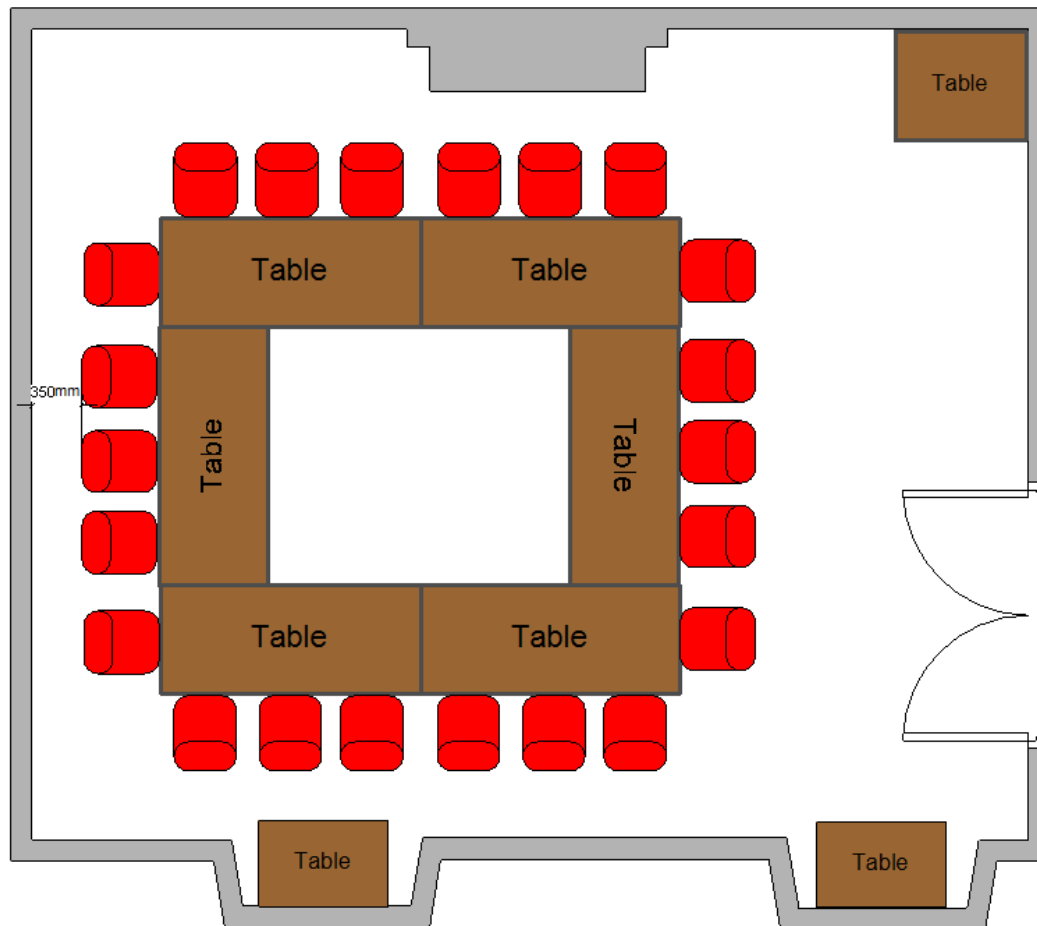
Old Gala House – Scott Room: Meeting – Theatre Style

Maximum Occupancy = 42



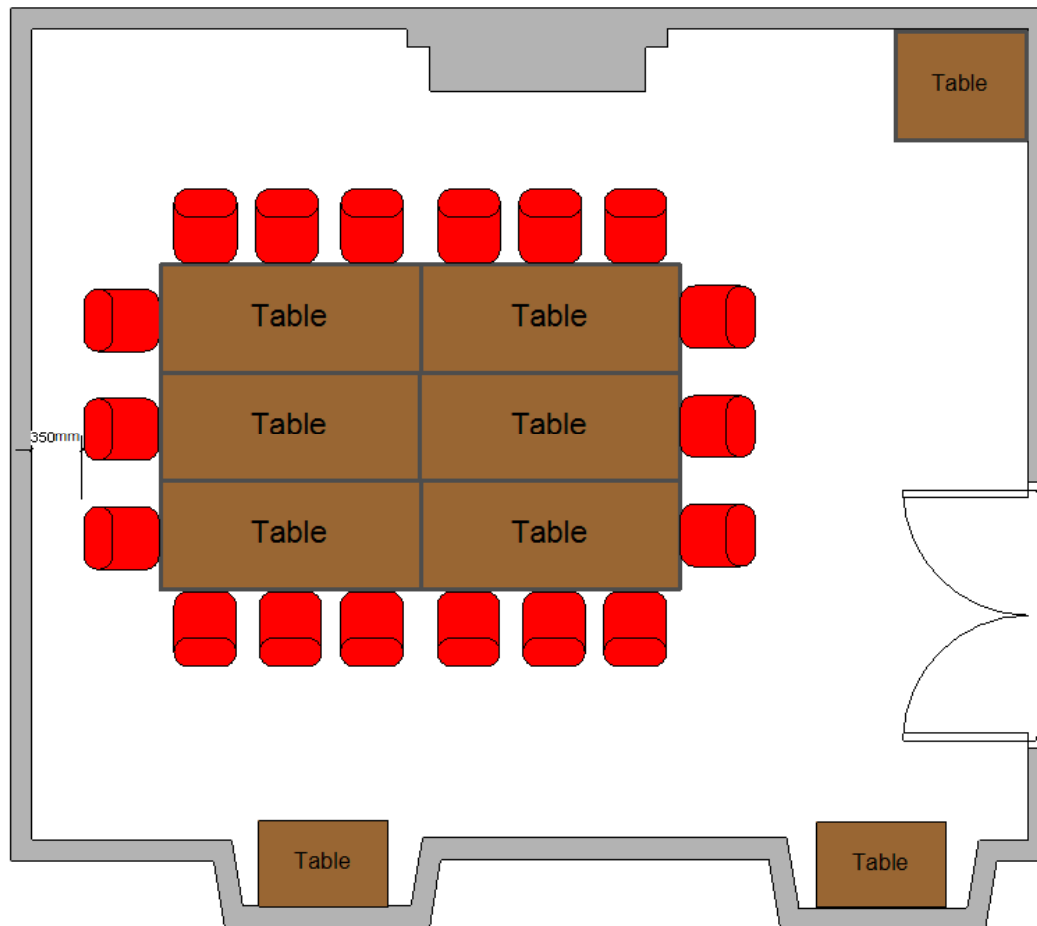
Old Gala House – Scott Room: Meeting – Round Table Style

Maximum Occupancy = 22



Old Gala House – Scott Room: Meeting – Boardroom Style

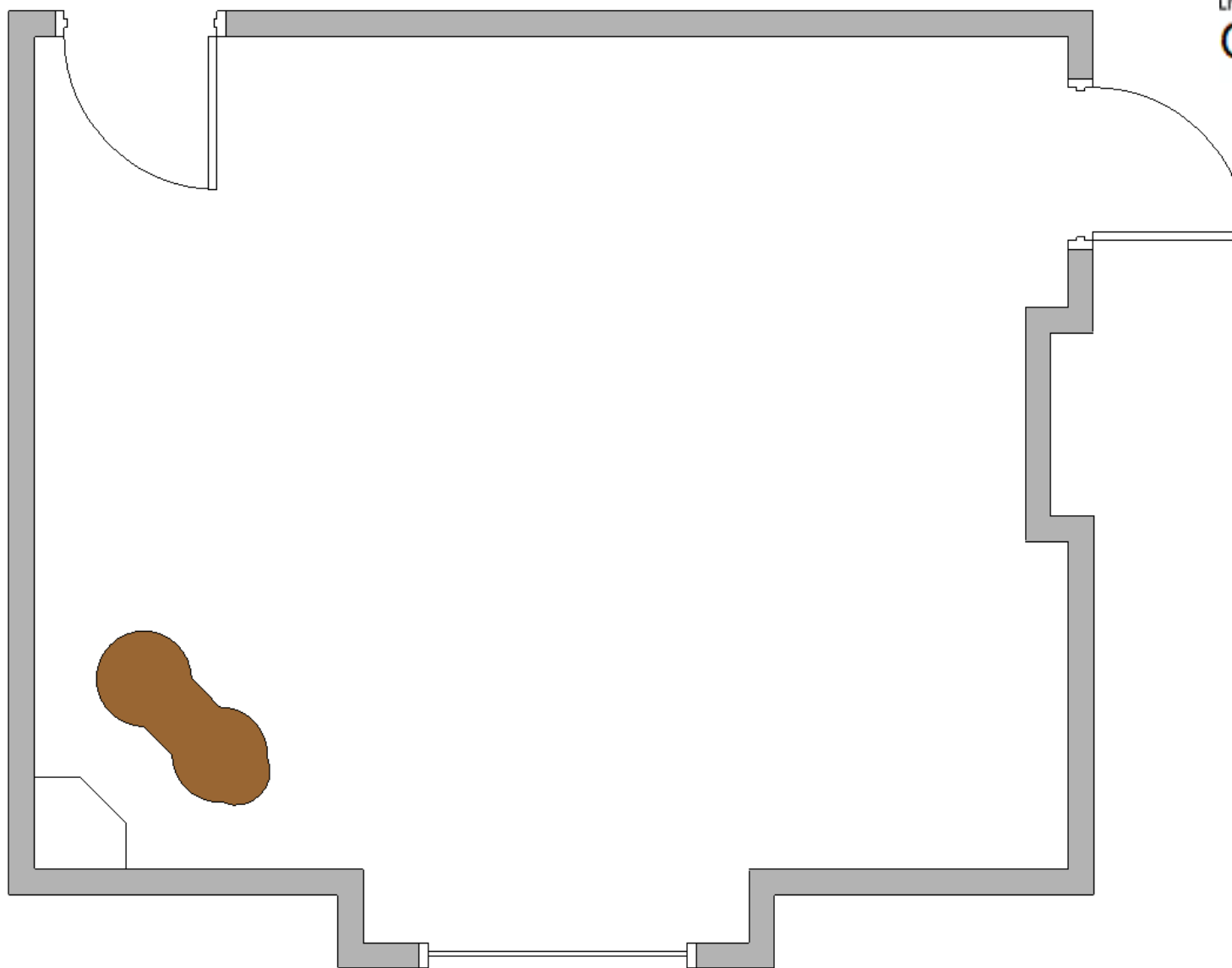
Maximum Occupancy = 18



Old Gala House – Pringle Café Room (standing only)

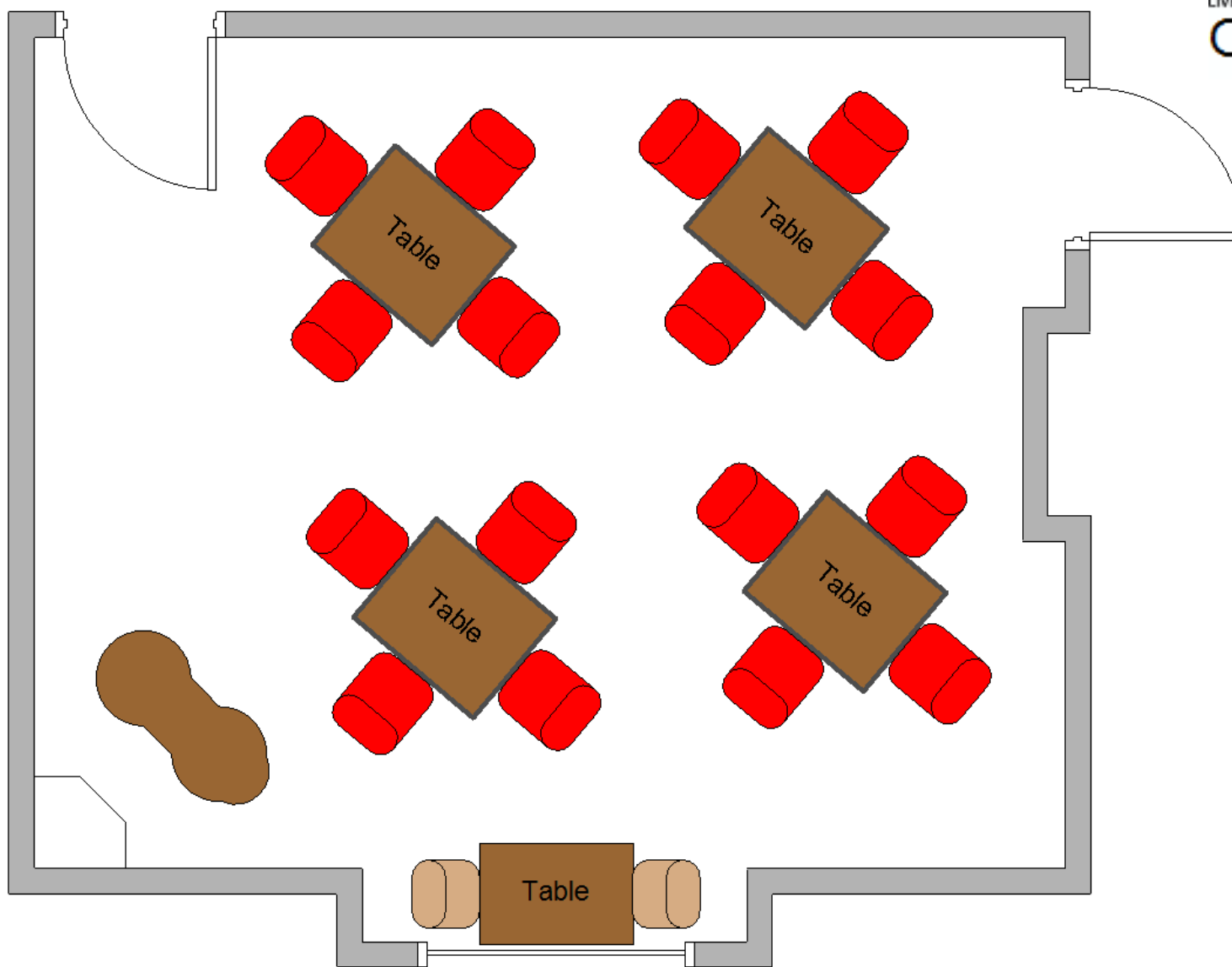
Area = 28m² (less walkways = 22m²)

Maximum Occupancy – Standing Only = 73 (limited by floor area)



Old Gala House – Pringle Café Room (standing only)

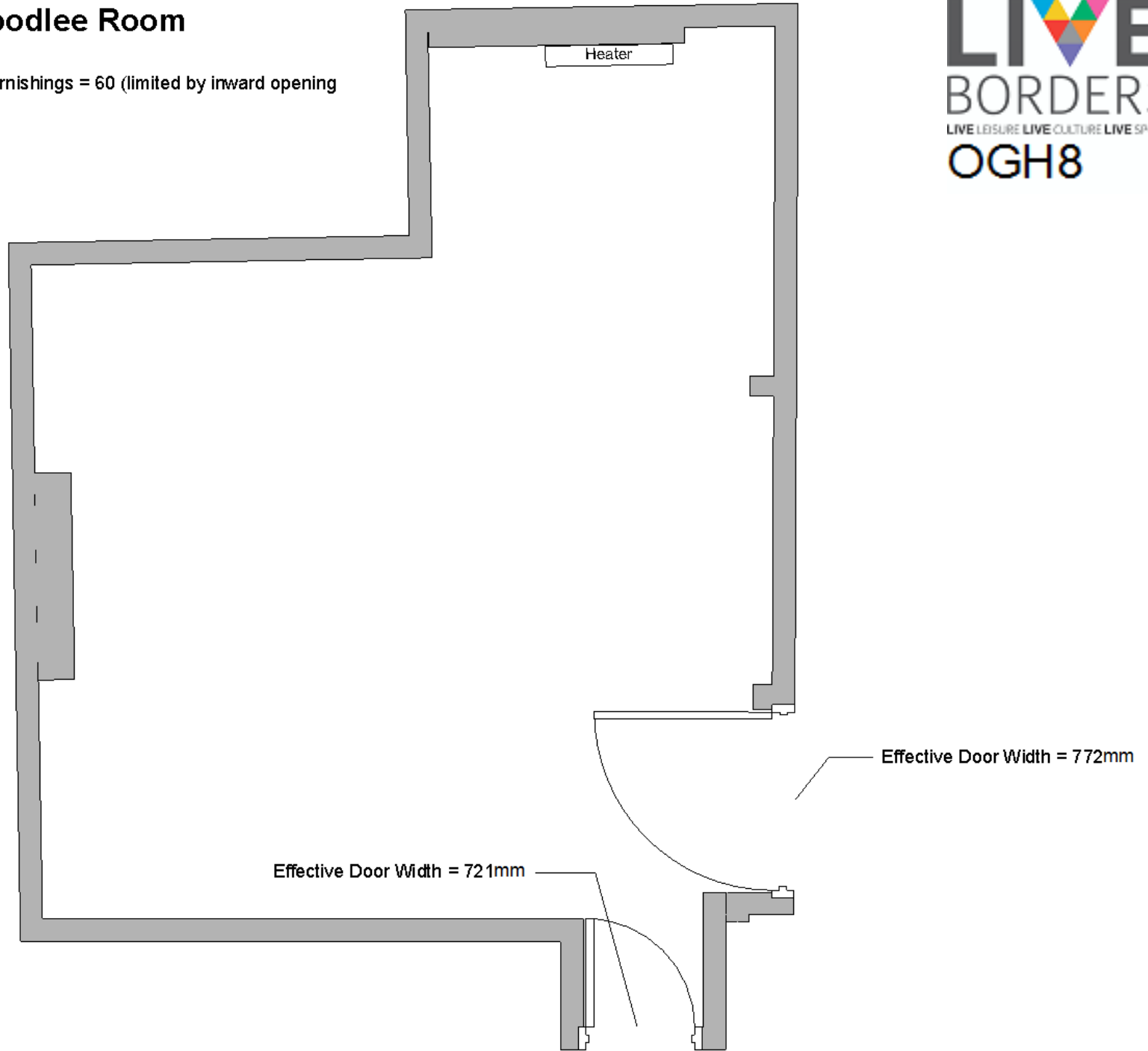
Maximum Occupancy – Cafe = 18



Old Gala House – Torwoodlee Room

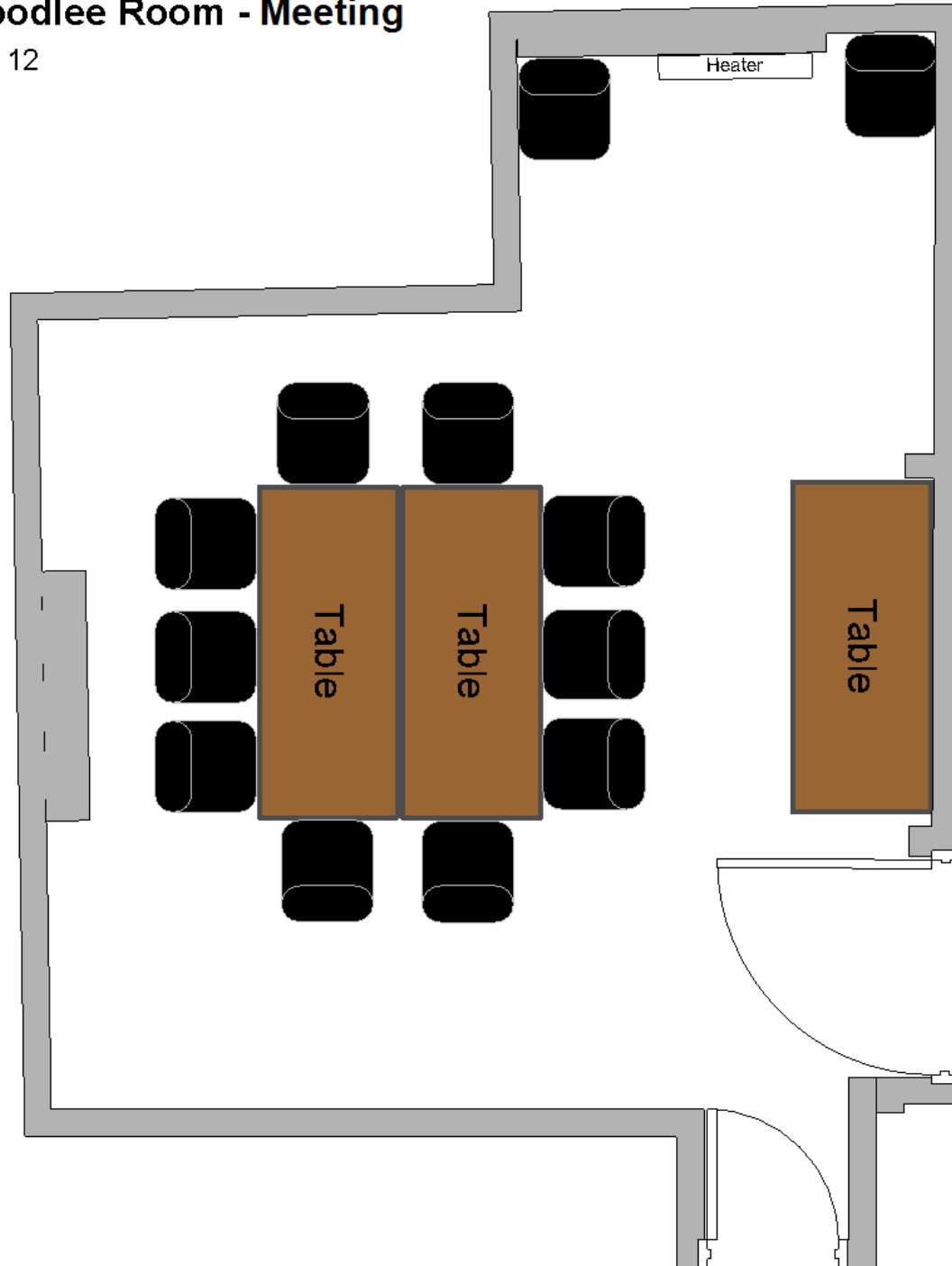
Area = 24m² (less walkways = 20m²)

Maximum Occupancy – Standing Only no furnishings = 60 (limited by inward opening doors)



Old Gala House – Torwoodlee Room - Meeting

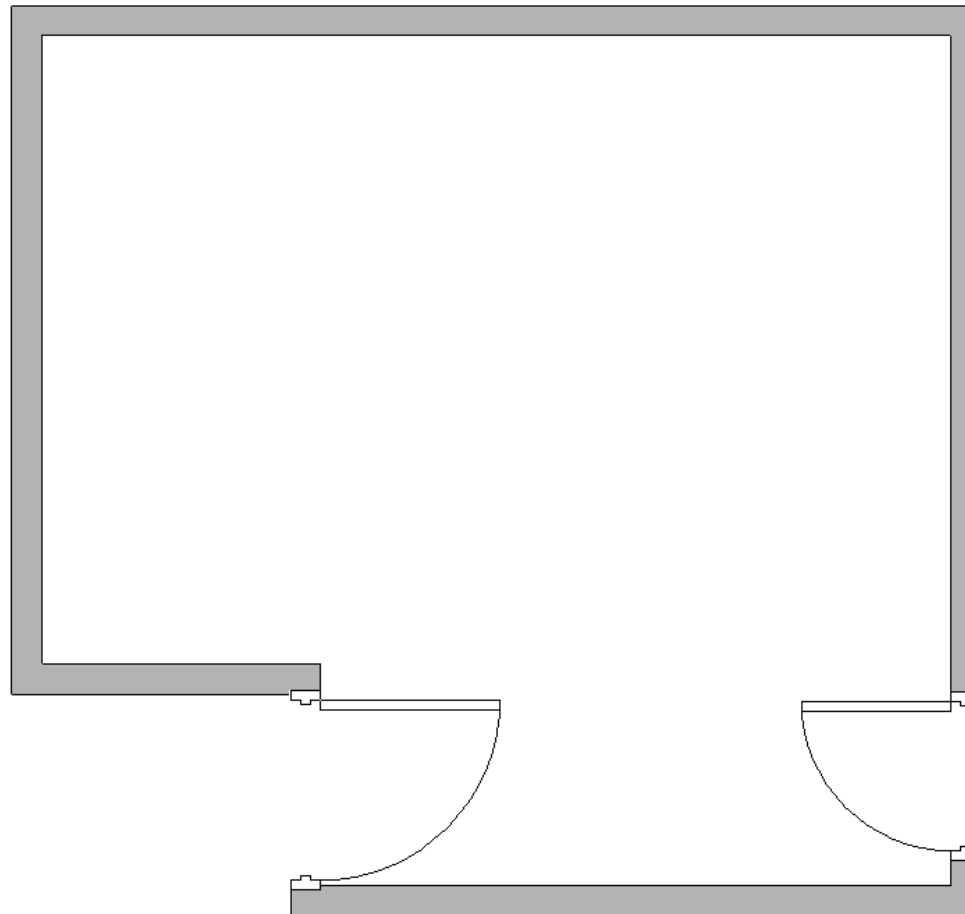
Maximum Occupancy – Meeting = 12



Old Gala House – Buckholme Room (standing only)

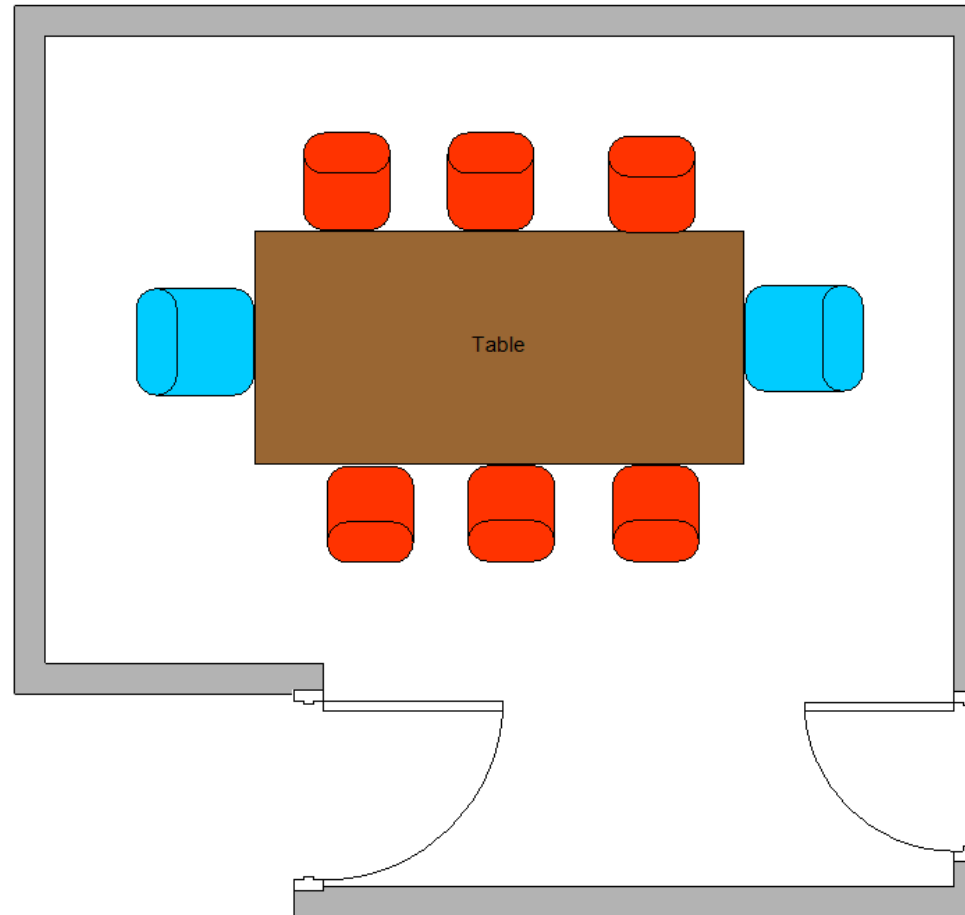
Area = 14m² (less walkways = 11m²)

Maximum Occupancy – Standing Only with no furnishings = 36 (limited by floor area)



Old Gala House – Buckholme Room: Meeting

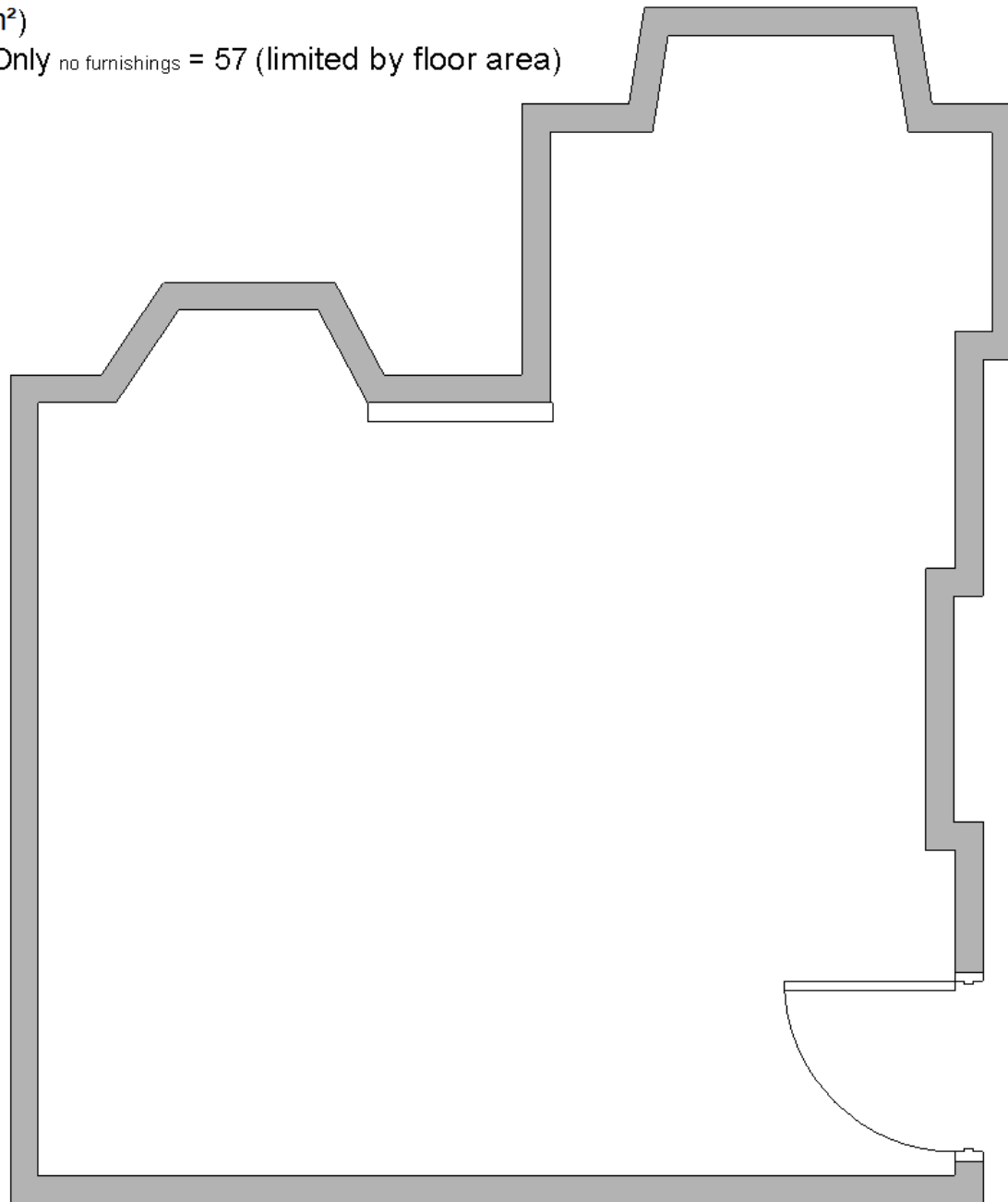
Maximum Occupancy = 8



Old Gala House – Ashiestiel Room (standing only)

Area = 22m² (less walkways = 17m²)

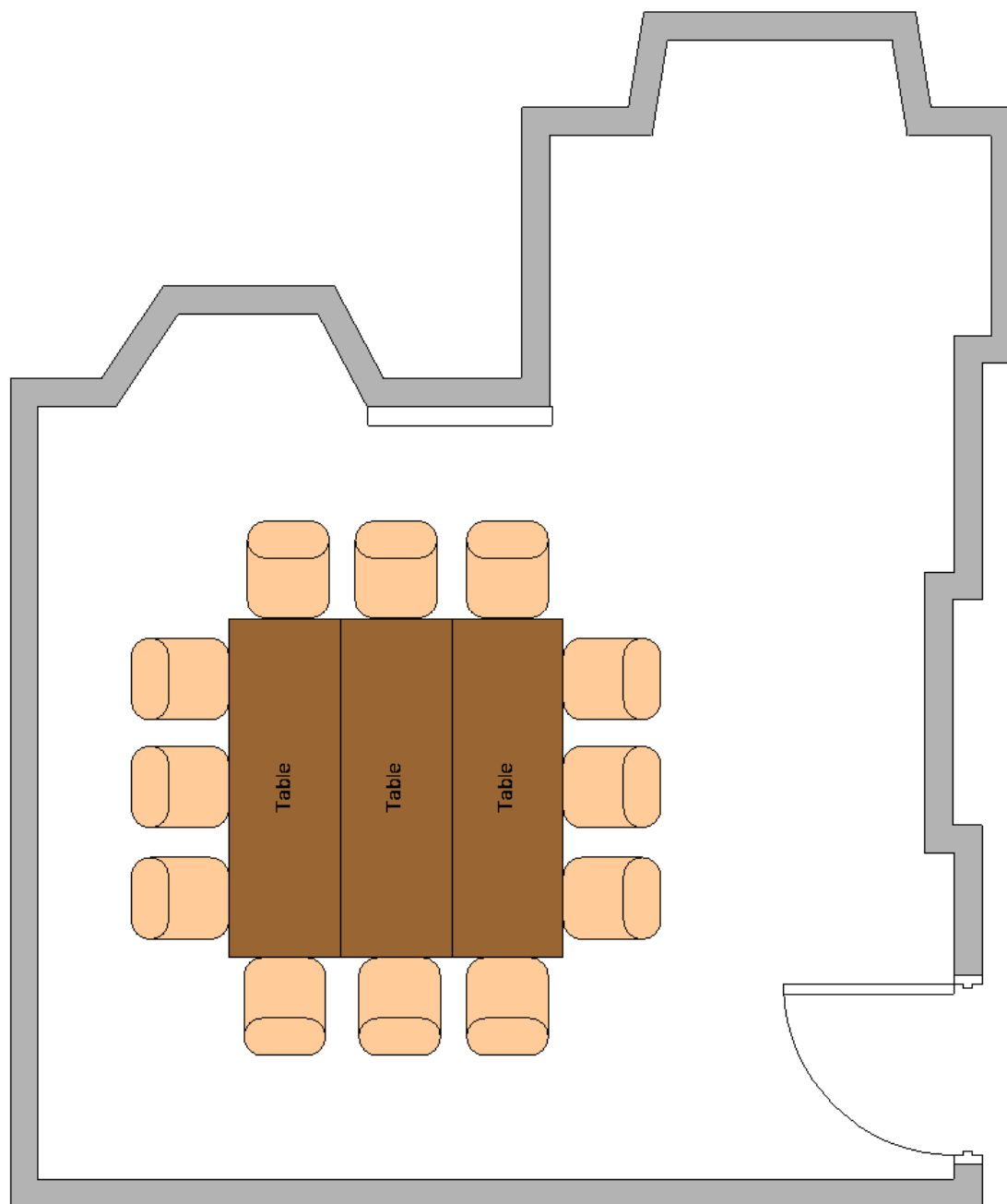
Maximum Occupancy – Standing Only no furnishings = 57 (limited by floor area)



LIVE
BORDERS
LIVE LEISURE LIVE CULTURE LIVE SPORT
OGH12

Old Gala House – Ashiestiel Room: Meeting

Maximum Occupancy = 12

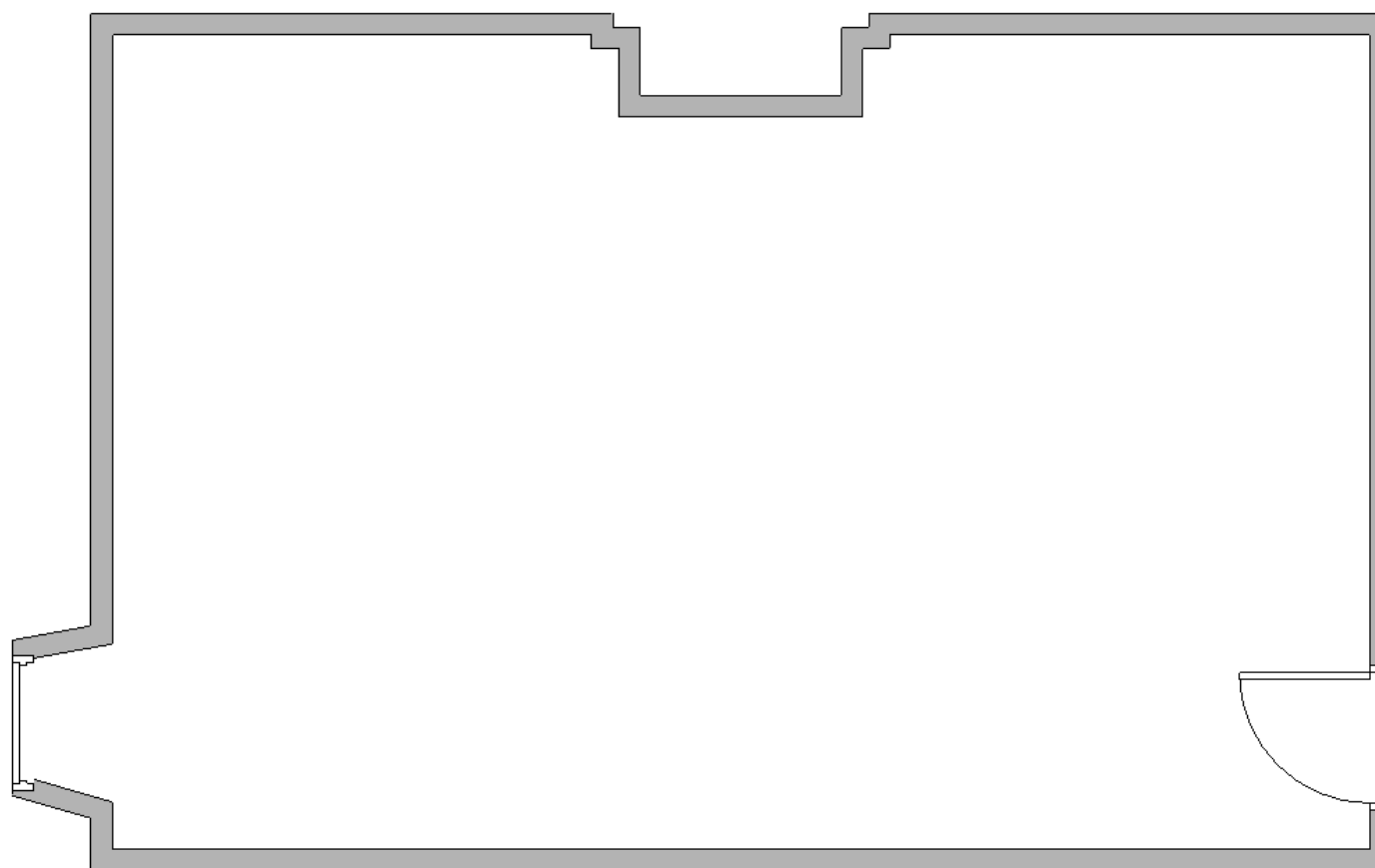


Layout and capacity based on the requirements of BS 9999: 2008 - Code of practice for fire safety in the design, management and use of buildings

Old Gala House – Boyd Gallery

Area = 48m² (less walkways = 42m²)

Maximum Occupancy – Standing Only = 60 (limited by only 1 door opening against the flow of travel)



Effective Door Width = 862mm