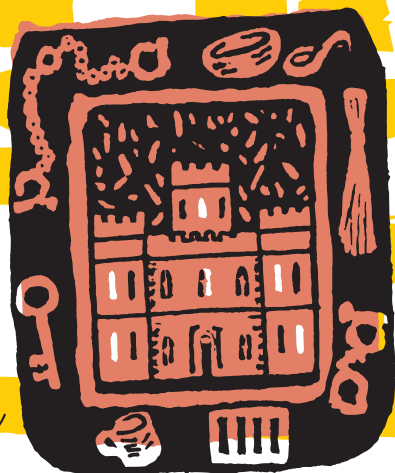


Jedburgh Castle Jail

Children's Activity Trail



Welcome to Jedburgh Castle Jail

Here you can find out about the history of Jedburgh from early times up to the present day. You can also explore the history of this building, which was the town's Jail from 1823 until 1886, and discover what it would have been like to have been a prisoner here. The first rooms you go into are in the central building of the Jail. This is the Jailer's House where the Jailer, his wife and their Assistant lived – right in the middle of the prison so they could keep an eye on everything!

The Bell Tower and Corridor

Look up. What was the rope used for?
When would the bell have been rung? (The answer is on the floor!)

.....
Draw what you think the bell would have looked like.

The Romans reached Southern Scotland by 80AD. What is the name of the old Roman army road which is nearby?

D _ _ _ S _ _ _



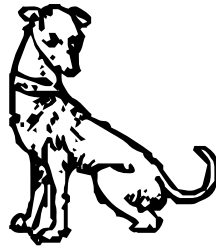
Abbey Room

Jedburgh Abbey was founded in 1138 by King David I.

The ruins of this beautiful building can still be seen down in the town.

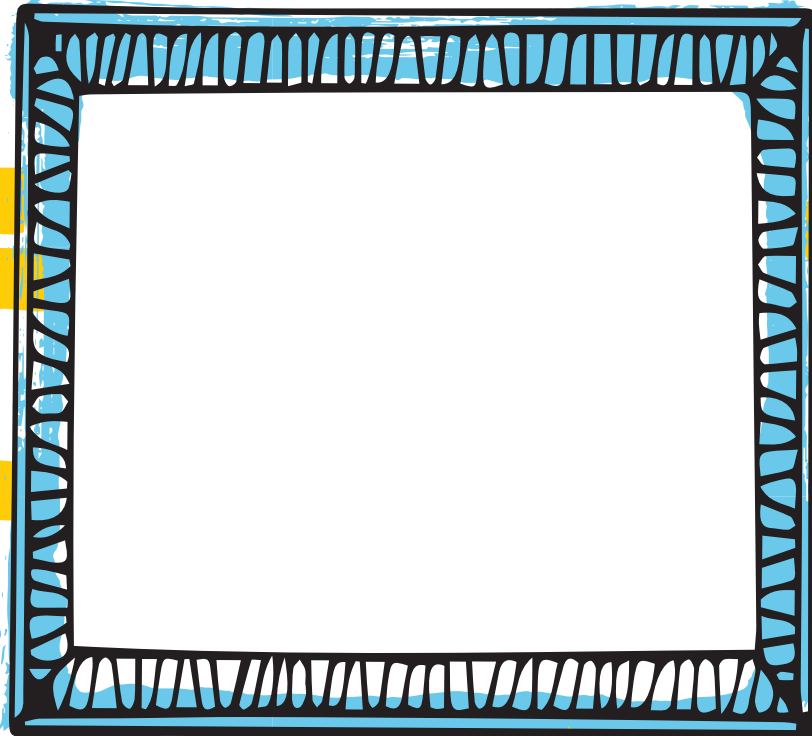
Find the picture of Abbot John and his dog.

Choose a name for the dog



Castle Room

Imagine living in Jedburgh in the 14th, 15th and 16th centuries - every few years there were battles and raids as the English and the Scots fought to control the Borders region.



Jedburgh Castle

The building you are in now may look like an ancient castle but it was only built in 1820, as a Jail. Jedburgh Castle was built in the 12th century.

When was it demolished?

Find a picture of the original castle on this site and draw it here.

Mary Queen of Scots Room

Mary Queen of Scots was less than a year old when she was crowned. She spent most of her childhood in France before returning to rule her country aged only 19. She came to Jedburgh in 1566 to hold court and dispense justice but fell ill and almost died. Mary eventually escaped from Scotland and asked for help from her cousin, Elizabeth I of England. But Elizabeth did not trust

Mary and imprisoned her. In the end Elizabeth had Mary executed in 1587.

Colour in the picture of Mary Queen of Scots



UPSTAIRS This floor looks at Jedburgh's history from 1750 to the present day.

Jedburgh History Word Search

All the words for this word-search can be found in the rooms on this floor. Have a look round before you start. The answers are forwards or backwards and horizontal or vertical.

K	Q	X	S	P	V	B	Z	C	I	P	Z
D	S	O	M	E	R	V	I	L	L	E	S
U	R	N	R	D	S	E	S	F	P	A	T
N	E	J	A	S	C	I	Y	I	S	R	A
D	T	A	C	F	A	T	E	I	K	B	H
Q	S	W	L	S	L	C	Z	Q	A	C	S
B	W	Y	E	Y	L	H	S	Y	G	R	E
O	E	S	O	J	A	B	D	N	A	H	S
A	R	G	A	P	N	X	E	S	T	U	W
V	B	H	U	T	T	O	N	F	V	I	A

Here are some clues to help you do the word search:

➔ The oldest sport in Jedburgh

➔ Famous fruit grown in Jedburgh

➔ Inventor of ploughs, manufacturer of telescopes and astronomer

➔ First ever woman member of the Royal Astronomical Society

➔ Inventor of the kaleidoscope

➔ Main person in Jedburgh's summer festival

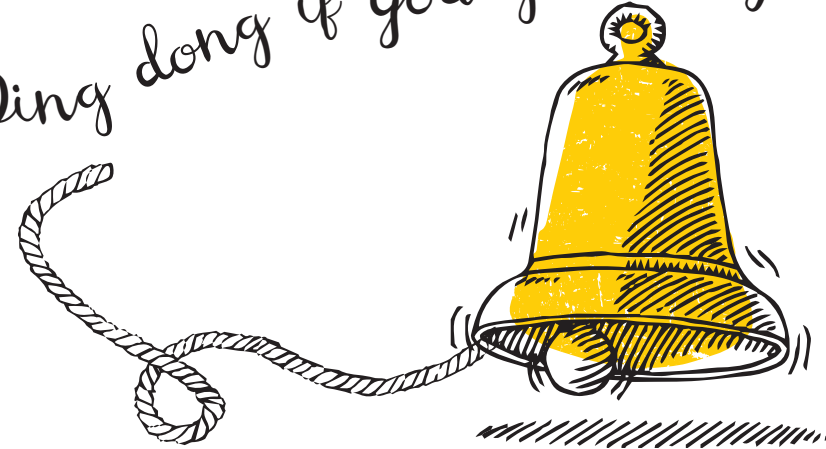
➔ Discoverer of patterns in the rocks which changed our view of history

ANSWERS: HANDBA PEAR VEITCH SOMERVILLE BREWSTER CALLANT HUTTON

Remember to look for the bell

Does it look like the one you drew?

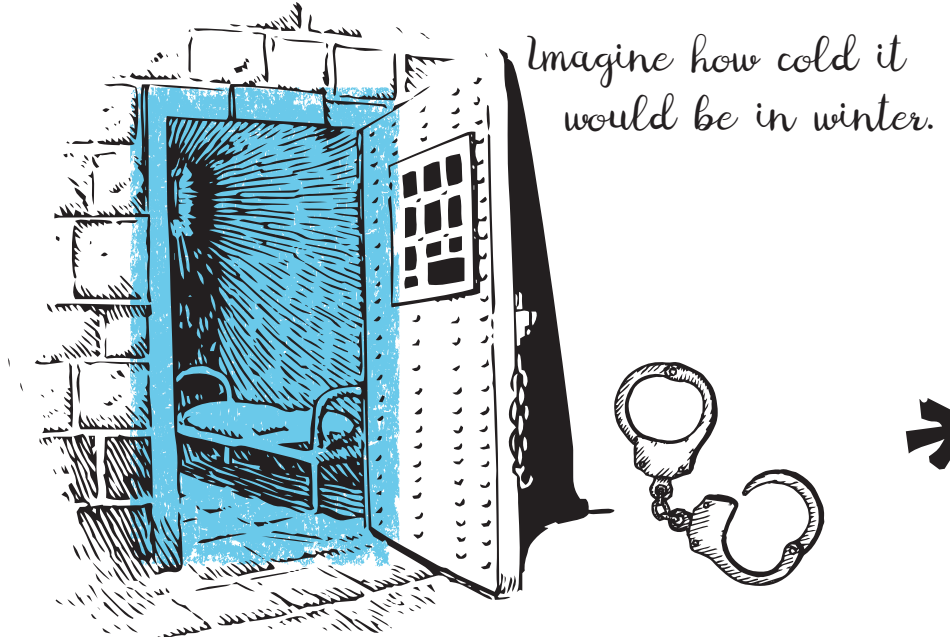
➔ Ding dong if you got it right!



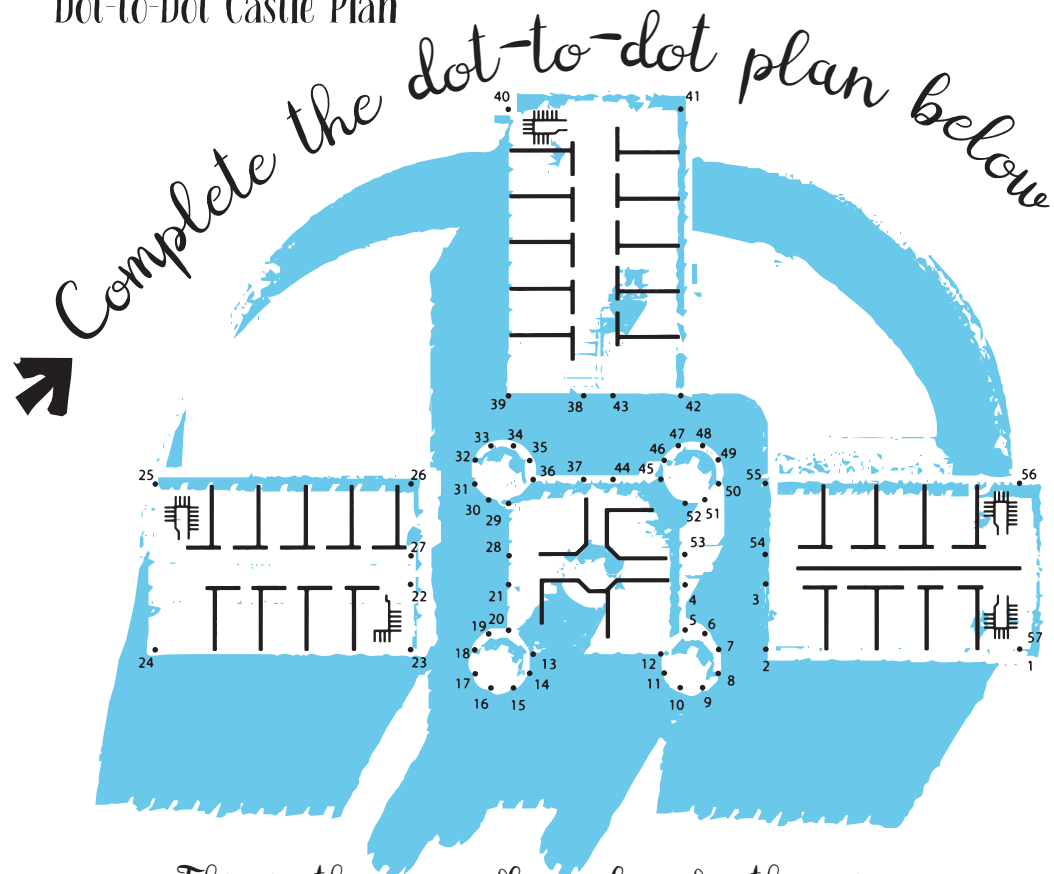
Now you can go across the metal bridge outside to explore the cell blocks. The first block you go into was for debtors (people who owed money) and female prisoners.

Cell Block 3: Upstairs

There was originally a wall all the way down the middle of this passage so the debtors were completely separate from the female prisoners. Stand where the wall would have been and see how narrow the corridors were. Some of the cells have a fireplace but some don't.



Dot-to-Dot Castle Plan



This is the upper floor plan for the prison.
Can you mark the things on your plan?

- A - The Jailer's House B - The Bell Tower in the middle of the Jailer's House
C - Cell Block 3 (with the wall down the middle of the corridor)

Nothing to Do

When prisoners first came here in the 1820s and 1830s they were not given any work to do and were expected to be silent.

Go into the first cell on the right.
Use the egg timers to see if you
can be still and quiet for 1, 3
or even 5 minutes!



Prison Food

What do you think the prisoners were given to eat?

Find the panel which says 'The Daily Routine' and circle the five main items:



Cell Block 3: Downstairs

Here the debtors (people who owed money) had dayrooms.
Their accommodation was better than that of ordinary prisoners.
Family and friends could bring them in food and drink.

What kind of food would you have
liked to have had brought in to you?

.....

.....

.....

Breaking the Rules

Some of the display panels in this room describe the punishments which prisoners might be given if they broke the prison rules. They included only having bread and water, and for more serious offences being locked in a dark cell for 24 hours.

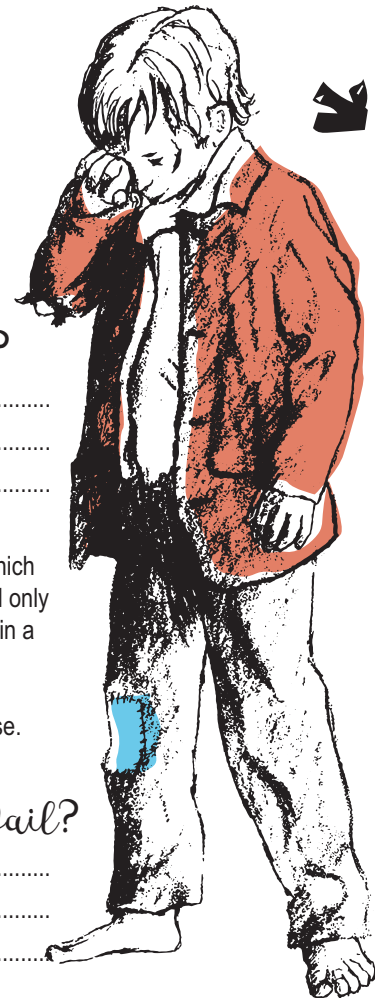
Children could be sent to prison when Jedburgh Castle Jail was in use.

What do you think you would have
missed most if you had been in the Jail?

.....

.....

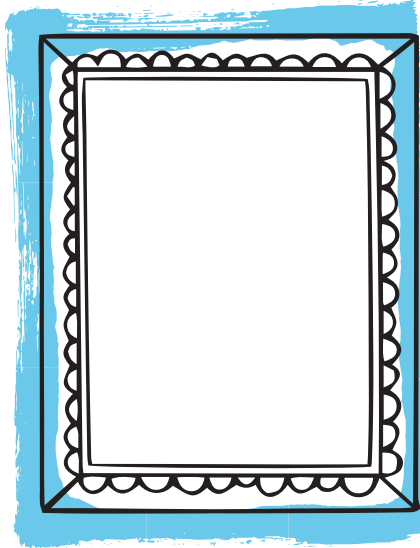
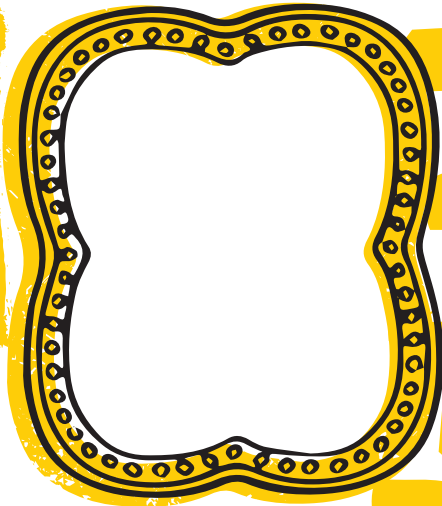
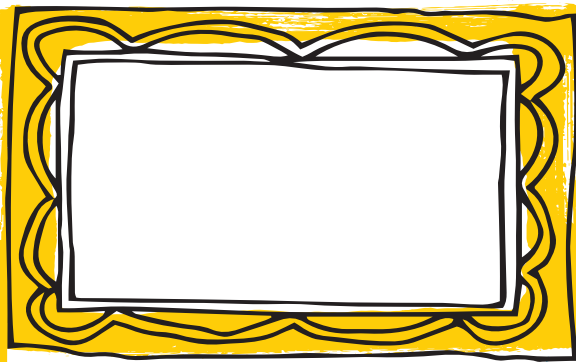
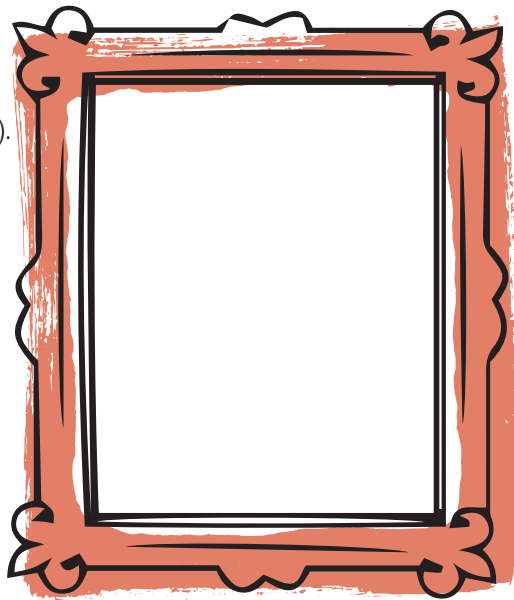
.....



Out in the fresh air

Find the exercise yards with the stone circle. Try walking round the circuit 3 times 'in an orderly fashion' (only in one direction). A prisoner might spend an hour a day doing this. Imagine this as the only exercise you are allowed.

Draw some of the parts of the building which makes it look like a castle.



We hope you have enjoyed your visit today and had fun on the activity trail. Take this booklet home with you to help you remember your day out at Jedburgh Castle Jail.

Don't forget to collect your sticker from a member of staff before you leave!

